

## Screening Process

Prior to enrolling at the Madison Early Childhood Education Center, all children must be screened for overall development to determine what type of program is needed.

### Process Steps

1. Parents contact the office to request screening paperwork. All paperwork is then completed by families and returned to the Madison office.
2. Madison's Child Find Team reviews the screening paperwork to determine the type of program for your child based on the information provided.
3. Parents are informed of the recommended program for your child within 2-4 weeks after completed paperwork is received by the Madison office.
4. Children are eligible for at-risk programming based on a weighted criteria that is developed based on recommendations due to funding received from the Preschool for All grant. We are required to verify income from every family who is interested in at-risk programming. Income verification can be provided through either a tax document, two current consecutive pay stubs, or proof of other accepted state assistance.
5. We will contact you if your child needs a formal evaluation based on the information received. This process includes a meeting to review your child's development to determine if an evaluation is needed and to gain consent to formally evaluate your child and determine if they are eligible for special education services.

## ABC Program

The ABC program is a highly structured classroom for students with IEP's who have needs that require specialized instructional practices and a high level of individual support. The primary goal of the program is for students to generalize skills learned to a variety of educational activities and settings. This classroom can accommodate 8-10 students with a special education teacher, multiple classroom assistants, and related service personnel as needed.

## ECSE Program

The ECSE Program is a structured classroom for students with IEP's who require a high level of support either in a small group or individual settings to make progress toward goals. This classroom can accommodate 10 students with a special education teacher, multiple classroom assistants, and related service personnel as needed.



Madison Early Childhood  
Education Center  
130 W. Madison Street  
Elmhurst, IL 60126  
(630) 617-2385

<http://mecc.elmhurst205.org>

Elmhurst CUSD #205

# Madison Early Childhood Education Center





## General Information

All Madison programs use The Creative Curriculum along with The Project Approach for instruction which is aligned with the Illinois Early Learning and Development Standards. This approach allows for students to expand their skills in all areas utilizing developmentally appropriate practices in a language rich environment. All programs meet 5 days a week for 2.5 hours daily either a morning or an afternoon session. The type of services provided are described in this brochure.



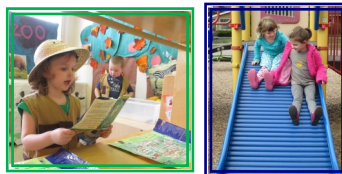
## Speech Itinerant Therapy

This is a service offered to students who are not in a classroom setting but require special education support. Delivery of service may include: small groups, carry over activities for home, and consultation with parents or private preschool teachers. Students are brought in for therapy during school hours once or twice a week to serve the number of minutes specified on a student's IEP.

## Blended Classroom

Most of Madison's classrooms are blended and instruction is provided by a teacher who is certified in Early Childhood, Special Education, and English Language Learning. The classroom size is 16 students. This classroom is comprised of students that meet the at-risk criteria, receive special education services or pay tuition to attend. In addition to the teacher, two assistants are in each classroom and all therapy services are pushed into the classroom with therapists co-teaching and providing services in small groups.

- **At-Risk Students** are determined based on the information provided during the screening process. At-risk students meet the weighted criteria that indicate the possibility of academic trouble in the future.
- **Students with IEP's** have been formally evaluated and identified as needing special education support and services.
- **Tuition based students** are students who do not meet the at-risk criteria. Tuition is \$2500 for the year or \$3500 for students with bus service. In order to enroll in the tuition program, a student must be 3 years old on or before September 1st. The wait list for tuition spots opens on September 1st for children that will turn 3 years old on or before September 1st of the next school year.



## Dual Language Classroom

Madison offers a one way dual language classroom that is designed to support children whose native language is Spanish. Instruction in the classroom is 80% Spanish and 20% English. There are up to 16 students in this class.



Check out our website for the latest information at:  
<http://mecc.elmhurst205.org>

